

THE ANATOMY OF A DISTANCE-TIME GRAPH

A STRAIGHT LINE MEANS **CONSTANT SPEED**.

WE CAN FIND THE SPEED BY FINDING THE GRADIENT. A STEEPER LINE MEANS A FASTER SPEED.

A LINE SLOPING DOWN MEANS THE BODY IS **COMING TOWARDS** THE OBSERVER.

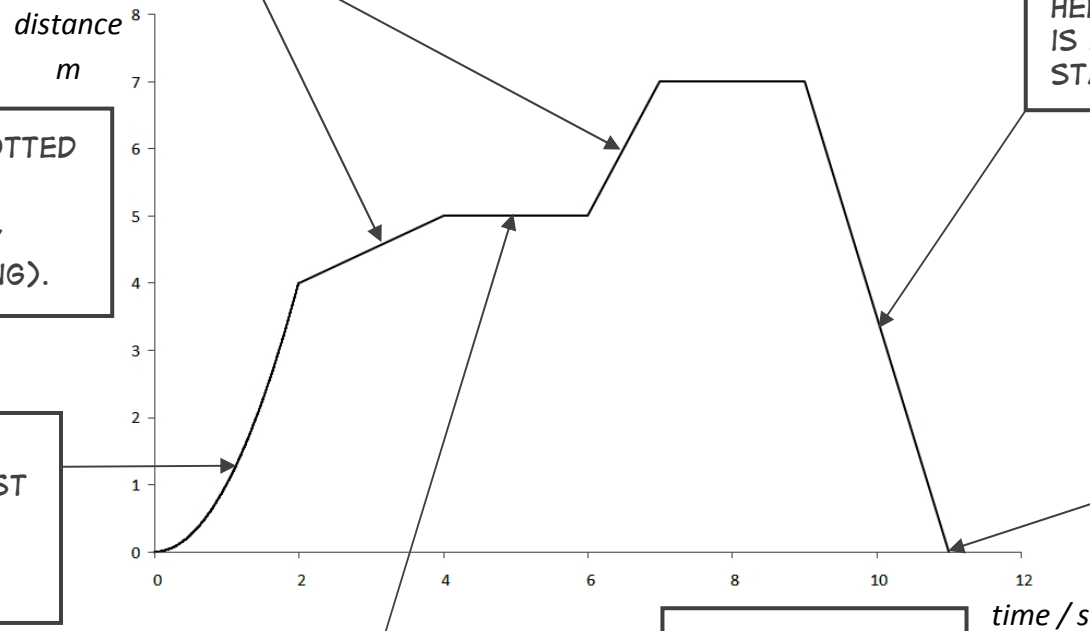
HERE, THAT MEANS IT IS RETURNING TO THE STARTING POINT.

DISTANCE IS PLOTTED ON THE Y AXIS.

(DISTANCE AWAY FROM SOMETHING).

HERE THE LINE IS GETTING STEEPER, SO THE BODY MUST BE SPEEDING UP.

IT IS **ACCELERATING**.



A HORIZONTAL LINE MEANS THE BODY IS **STATIONARY**. IT IS NOT MOVING.

(THE GRADIENT IS ZERO).

TIME IS PLOTTED ON THE X AXIS.

THE BODY HAS ENDED AT DISTANCE ZERO, SO IT HAS RETURNED TO ITS STARTING POINT.